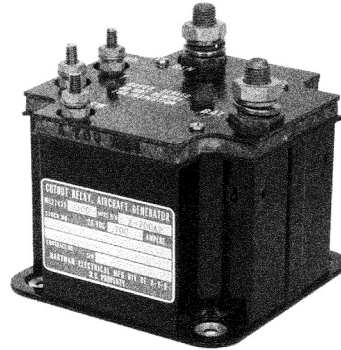


A-700 Series Cutout — Reverse Current, Rated up to 300 Amps, 28 Vdc

See Part Number Listing on Last Page

Product Facts

- SPST NO, Double break
- Gasket sealed
- Meets many requirements of MIL-PRF-6106



Performance Data

Electrical Characteristics

- Contact Arrangement** — SPST NO, Double Break
- Rated Operating Voltage** — 28 Vdc
- Resistive Rating** — 300 Amps
- Reverse Current Dropout** — 9 to 25 Amps
- Differential Pickup** — $.5 \pm .15$

General Characteristics

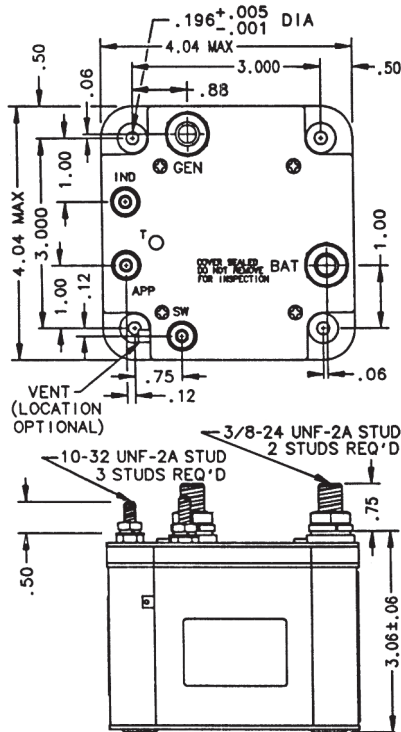
- Temperature Range** — -55°C to $+71^{\circ}\text{C}$
- Operating Cycles (Life) at Rated Resistive Load, Min.** — 50,000 cycles
- Operating Cycles (Life) Mechanical, Min.** — 100,000 cycles
- Electrical** — 50,000 min.
- Dielectric Strength** — All Circuits to Ground — 1,250 Vrms
Circuit to Circuit — 1,250 Vrms
Coil to Ground and Aux. Contacts — 500 Vrms

Weight, Max. —

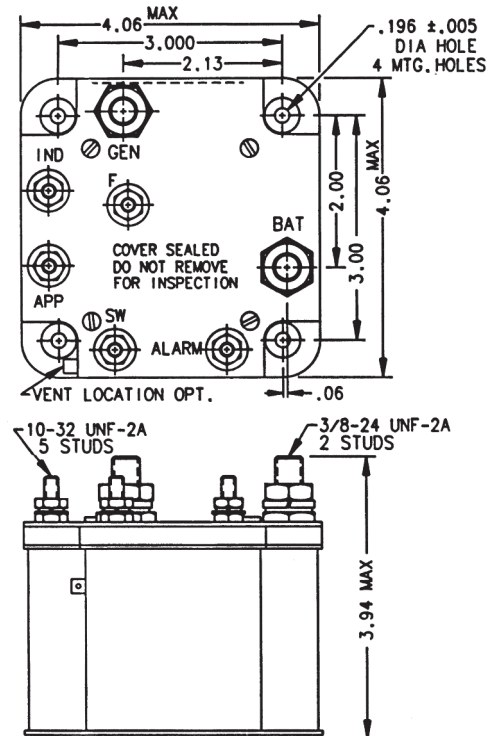
- A-700AAP — 2.9 lbs
- A-700ZC-7, A-700ZG — 2.5 lbs

Coil Characteristics

- Duty Cycle** — Continuous
- Duty Cycle when using "APP"** — Intermittent
- Nom. Coil Voltage** — 24 to 30 Vdc
- Pickup Voltage, Max.** — 18 Vdc
- Dropout Voltage** — 0.5 to 7.0 Vdc



Mounting Style A

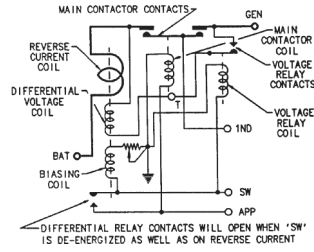


Mounting Style B

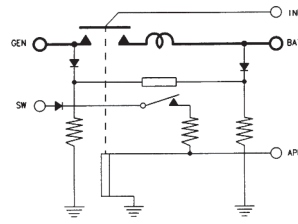
For factory-direct application assistance, phone 419-521-9500 or fax 419-526-2749.

A-700 Series Cutout — Reverse Current, Rated up to 300 Amps, 28 Vdc (Continued)

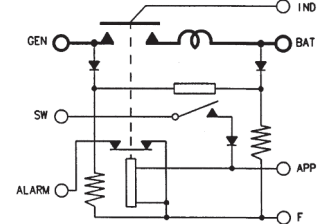
Circuit Configurations (Consult factory for other available circuit configurations)



Circuit Configuration 1



Circuit Configuration 2



Circuit Configuration 3

HARTMAN Part Number	Construction Type	Mounting Style	Coil Type	Circuit Config.	TE Part Number
A-700AAP	Gasket/Vented	A	Continuous	1	1616109-1
A-700ZC-7	Gasket/Vented	A	Continuous	2	1616109-7
A-700ZG	Gasket/Vented	B	Continuous	3	1616109-9

For factory-direct application assistance, phone 419-521-9500 or fax 419-526-2749.